

Ukulele Lady

Gus Kahn & Richard Whiting (Arr. Maria Dunn 2008)

♩ = 60 $B\flat$ *divide if necessary*

Vln. *pizz*

Vln.

9

They saw the splen-dor of the moon-light on Hon-o - lu - lu Bay
We used to sing to them by moon light on Hon-o - lu - lu Bay

Vln.

13

There's some-thing ten-der in the moon-light on Hon - o - lu - lu Bay
Fond mem - 'rys cling to them by moon light al-tho'they're far a - way

Vln.

17

all the beach-es full of peach-es a - long
They'll be go - ing eyes are glow-ing to kiss

Vln.

21

And in the gli-mmer of the moon-light we love to sing our song
To see some-bo - dy in the moon-light and hear the song they miss

Vln.

V.S.

25



F Am Dm F⁶ F Dm F

Vln.

30



Gm⁷ C⁷ Gm⁷ C⁷ Gm⁷ C⁷ F

Vln.

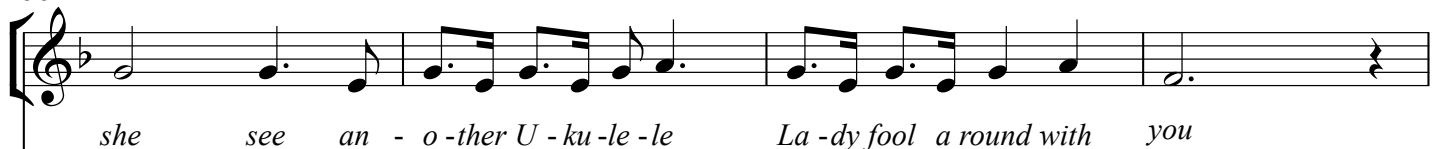
34



F Am Dm F⁶ F Dm F

Vln.

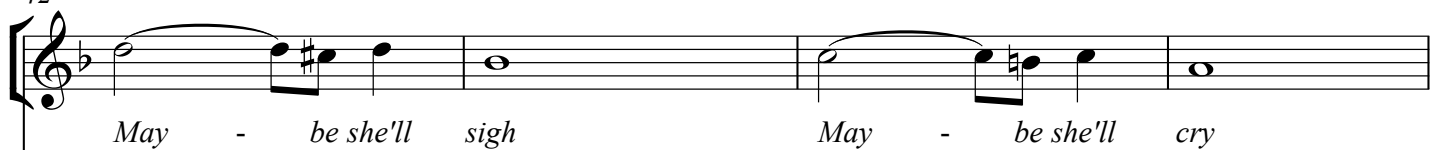
38



Gm⁷ C⁷ Gm⁷ C⁷ Gm⁷ C⁷ F

Vln.

42



B^b F

Vln.

46

May - be she'll find some bod - y else bye and bye to

G7 C7 C7

Vln.

50

sing to — When it's cool and sha-dy where the trick-y wick-i wack-ies woo If

F Am Dm F6 F Dm F

Vln.

54

you like - a U - ku-le - le La - dy U - ku-le - le La - dy like - a

Gm7 C7 Gm7 C7 Gm7 C7

Vln.

57 | 1. [Back to verse 2] 2-3 [Back to Chorus]

you you

F G0 F C7 F F G0 F C7 F F

Vln.

62 | 4.

u - ku-le - le la - dy like - a you u - ku-le - le la - dy like - a

F

Vln.

65

u - ku-le - le la - dy like - a you U - ku - le - le La - dy

arco

Vln.